

westport community partnerships *newsletter*

december 2010

a turner development initiative



A River Revealed in Westport

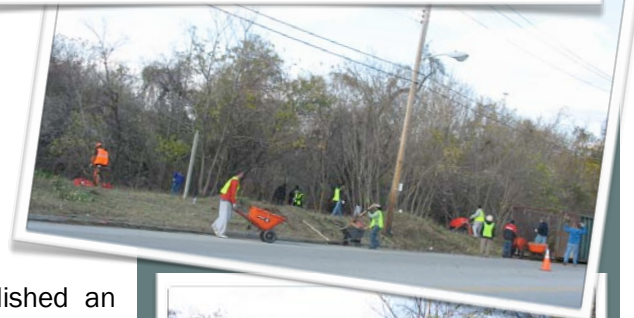
Volunteers tackle invasive weeds and pickup trash along Gwynns Falls watershed area

The Gwynns Falls stream has formed the northern border of Westport for generations, and for generations it has been so neglected, the shoreline so overgrown with invasive plants, that hardly anyone remembers it's there. But on Thursday, November 18th, Jessica Schuleri of Enterprise Holdings (Enterprise Rent-A-Car, Alamo & National) organized about forty volunteers, including students from area colleges, her Enterprise co-workers and a Westport high school student looking for community service hours, to join the Parks & People Foundation's Green Up, Clean Up Team in restoring the banks of the Gwynns Falls stream in Westport. Going forward, the Green Up, Clean Up Team, many members of which are Westport neighbors, will lead the ongoing effort to complete the restoration of the Gwynns Falls shoreline.

The volunteers accomplished an amazing amount of work in one day, improving the water quality flowing into the Middle Branch and the Chesapeake Bay and revealing an unobstructed view of the stream that has been blocked for decades.

Several neighbors stopped by to check it out and meet the volunteers. Looking at the water, Stacey McCracken-Jones, who has lived in Westport all her life, said she had never laid eyes on the stream before. Deborah Guest, who has lived in Westport for over fifty years, said she last saw the river when her father took her fishing there as a little girl.

Westport neighbors interested in participating in the restoration of the Gwynns Falls shoreline in Westport should contact Bonnie Crockett at Westport Community Partnerships.



The New Baltimore City Zoning Code

*It's your Code; the City
wants to hear your voice*

The last time the Baltimore City Zoning Code was revised, Richard Nixon was president. Now the City is revising the code again to take into account the changes in urban living over the last 40 years. It truly is the opportunity of a lifetime to make Baltimore a more vital, sustainable City.

The new code could affect your property and your neighborhood, so the City wants you to get involved.

The draft proposal is available online at www.rewritebaltimore.org. The Public Comment period ends December 15, 2010.

Comments may be submitted through an online format, or you may mail your comments to:
Dept. of Planning, 417 E. Fayette St.,
8th Floor, Baltimore, MD 21202

The goal of the new code is to facilitate a more transparent and predictable process; one that simplifies and clarifies. It is shorter than the existing code, more readable, using plain language and defining all terms, and easier to understand. Simple, easy to read tables, flow charts, illustrations and images are included throughout to help organize and explain various restrictions and requirements. The code also lists all administrators and officials by title and describes their responsibilities. For information: plan@baltimorecity.gov or call 410-396-PLAN.

*The artist's world is limitless.
It can be found anywhere,
far from where he lives
or a few feet away.
It is always on his doorstep.*

~Paul Strand.

World-renowned artist John Henry, to build 236-foot sculpture on Westport Waterfront

Sculpture to be Catalyst for Economic Development

Internationally renowned sculpture artist, John Henry, announced this month that he is partnering with Westport Waterfront developer Patrick Turner to build a 236-foot-tall illuminated metal sculpture on the Middle Branch Harbor. The piece is planned as a focal point of the 50-acre Westport Waterfront mixed-use development.

"Composed of intersecting steel beams, the sculpture will be a symbol of Baltimore and its economic strategy embracing creative thinking, innovation and entrepreneurship," said John Henry. "It elegantly reconfigures the symbols of its past into a piece that reaches toward a new future." The project also has deep personal meaning for Henry who experienced life saving surgery at Johns Hopkins Hospital last year, an experience that made him want to give back to the city that saved him.

In addition to the sculpture, Henry plans to open a large studio in Baltimore. "A studio in Baltimore will allow me to tap the region's highly skilled workforce and utilize the Port of Baltimore to ship large-scale works to my European clients overseas," said Henry.

The sculpture's planned location at Baltimore's southern gateway will give the sculpture prime visibility for city residents and the 174,000 commuters that travel the I-95 corridor every day. The sculpture fits the contemporary design vision for the Westport Waterfront development. "We believe Westport Waterfront will be a showcase for contemporary art and design, one that will drive regional economic development and community revitalization," said Patrick Turner. While still in the planning stages Turner says the sculpture will be built on privately owned land with private funds.



About the Artist

John Henry is known worldwide for his large-scale public works of art, which grace numerous museum, corporate, public and private collections. His works are prominently exhibited in many American cities and states as well as throughout Europe and Asia. Henry has shown his work extensively since the early 1960's and exhibits a definitive trademark style that is recognized internationally. His works range in scale from small tabletop pieces to some of the largest contemporary metal sculpture in the world. To see Henry's work visit <http://johnhenrysculptor.com>.

Are your children safe from lead paint poisoning?

Lead paint poisoning affects over 1 million children today

Lead poisoning is the number one environmental hazard threatening children throughout the US, affecting an estimated 310,000 children under the age of six each year. Children under six and pregnant women bear the greatest risk because lead poisoning inhibits physical and cognitive development in children and infants. Even low levels of lead poisoning can cause hyperactivity, aggressive behavior, learning disabilities, lowered IQ, speech delay and hearing impairment. High levels of lead can cause severe mental disabilities, convulsions, coma or even death.

Lead-based paint was used across the US for decades until it was banned for residential use in 1978. If your house was built before 1978 like most of the houses in Westport, it is likely that it contains lead paint. Lead-based paint, even if hidden under layers of newer lead-free paint, can break down because of age,

poor maintenance, or household repairs and create environmental health problems. Lead dust, caused by chipping, peeling, or deteriorating lead-based paint, is not the same as household dust. Lead dust is often invisible, heavier, and stickier and exists in even the cleanest of homes.

The Coalition to End Childhood Lead Poisoning is a national 501c3 non-profit organization, which creates, implements, and promotes programs and policies to eradicate childhood lead poisoning and further healthy homes.

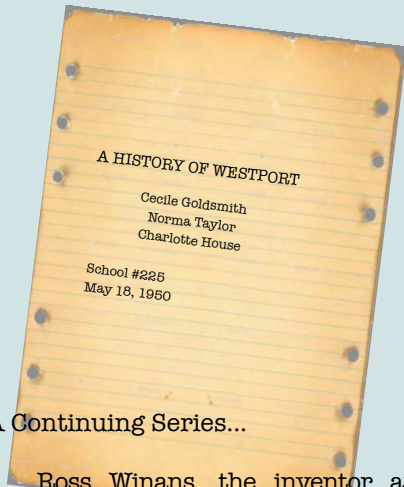
Originally founded in 1986 as Parents Against Lead, a grassroots volunteer effort. Today, the Coalition is a nationally recognized policy, advocacy and service organization head-quartered in Baltimore.

The Coalition works in collaboration with families, community organizations, educators, government agencies, insurers, property owners and health care providers to find attainable and cost-effective means to create lead-safe and healthy homes.

In August of this year, the Coalition received a \$1.3 million grant from the US Dept. of Energy for its Baltimore Green and Healthy Homes Initiative. The Initiative is structured to deliver a triple net benefit of creating higher quality green jobs, making homes green, healthy and safe, and ensuring better health for children and seniors. The Coalition is partnering with the City of Baltimore and other local non-profit partners to implement the plan.

Wes Stewart, Program Director, and Jay Johnson, Lead Hazard Project Director, will be speaking at the WNA meeting this Thursday, December 2nd, 6:30 pm (refreshments beginning at 6:00), Westport Academy, 2401 Nevada St.

Join your neighbors and learn about how the Coalition to End Childhood Lead Poisoning can help the families of Westport. Come to the meeting and find out how the Coalition can help your family. For more information, go to www.leadsafe.org or call 410-534-6447.



A HISTORY OF WESTPORT
Cecile Goldsmith
Norma Taylor
Charlotte House
School #225
May 18, 1950

A Continuing Series...

Ross Winans, the inventor and engineer who came to Baltimore in the 1820's to build cars and locomotives at the Mount Clare shops of the Baltimore and Ohio Railroad, bought land on both sides of the Middle Branch shortly before the Civil War.

The old Baltimore Company's iron furnace at the mouth of the Gwynns Falls was operated until about the time of the Civil War. Ore dug from pits still

to be seen, though filled with water now, beside the old Annapolis Road beyond Westport, and along the banks of the South Branch. The section around the old Annapolis road pits early took the name of Minersville, and a row of brick houses, once the homes of the miners who worked the pits, is still standing down there beside the road. The first school was built at Minersville, and was attended by the children of the miners and later used by the children of Westport.

Another corporation, the South Baltimore Company, became interested in property bordering on the Middle Branch below Gwynns Falls. And a town to be called South Baltimore, taking in part of what is now Westport and Mount Winans, was laid out there. The plot, surveyed on a gridiron street plan, appears on an old map of Baltimore and its environs.

When the Long Bridge, a wooden structure, was built across the Middle Branch from Ferry Bar to Brooklyn in 1856, it left Cherry Hill completely

isolated. Even then, however, the City of Baltimore owned the plot of land that is now the Potter's Field. A small brick building in the middle of this plot served as a hospital for the isolation of small pox cases.

The mouth of the falls was much wider than it is now. The Bush and Bayard Street docks, sometimes known as Andrew's or Ranstead's wharf, were just being bulkheaded. The eastern bank was bare except for the gasometers and resort house of the Baltimore Gas Light Company, located there in 1855.

A wooden bridge was built across the mouth of the Gwynns Falls. This bridge was known as the Harmon or Three Cent Bridge because of the toll, which was received from those passing over it. (According to a newspaper article dated April 27, 1950, this bridge is to be replaced by a steel and concrete structure starting in the immediate future under a contract awarded by the Board of Estimates.)

To be continued in the next newsletter...



Budding artists find inspiration in everything from fashion to pizza

Professional artist Scotty Walsh brings an after-school art project to Westport Academy

Scotty Walsh, professional artist and former circus performer, has performed in cabarets, clubs, theaters and tents. He worked as a circus instructor at the Seattle School for Acrobatics and New Circus Arts, as a guest artist at the Denver School for the Arts. Now Scotty has relocated to Baltimore and has taken on the role of Early Intervention/ Visual Arts Specialist at Port Discovery.

In a genuine desire to give back to the city he now calls home, on his own time and out of his own pocket, Scotty is bringing his talents in art and in teaching to Westport Academy in the form of an 8-week after school art project.

The after-school art project got underway on November 22nd, with a small but dedicated group of students ranging from aspiring fashion designers to already prolific artists.

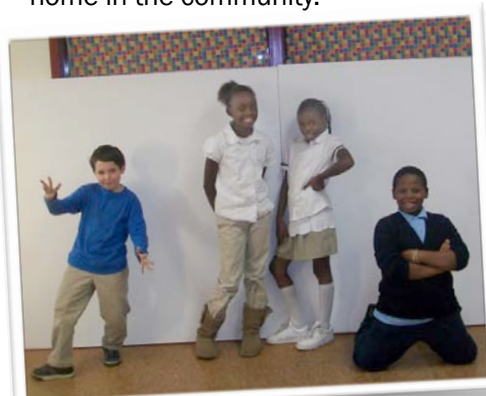
The group is looking forward to having a few more students join the project shortly.

Students have used oil pastels to create individual drawings and have combined elements of those drawings

onto a 5' x 10' canvas with colored pencils. During the next class, they plan to dive into the paint!

So far, elements of the group painting include a designer gown, the Eiffel Tower, the leaning Tower of Pisa, pyramids, paper airplanes, books, pizza, a butterfly, and dark and bright colors.

The finished canvas will be put on display at Port Discovery, along with thoughts about the piece from its creators. Later, the artwork will be displayed at Westport Academy, and eventually, perhaps, find a permanent home in the community.



UPS hiring temp workers for holiday season

UPS expects to hire about 50,000 temporary workers for the holiday shipping season. The temporary workers typically sort packages at UPS's air and ground stations around the U.S. To find an opportunity close to you that conveniently fits within your schedule, go to the UPS Careers website at <https://ups.managehr.com> and click on the Job Search tab, then enter your zip code or state. The default setting for the job search is set to "Package Handler" as that usually has the greatest number of available positions.

Community Meeting
Everyone's Invited
Join Us for a Fresh Start!

Westport Neighborhood Association
is holding its

December Meeting

THIS Thursday

**December 2nd
6:30pm**

(refreshments at 6:00)
Westport Academy
2401 Nevada Street

On the agenda:

- Wes Stewart, Program Director, and Jay Johnson, Lead Hazard Project Director
Coalition to End Childhood Lead Paint Poisoning
- Stan Janczak, Superintendent
Baltimore City Code Enforcement
- Updates from the WNA
Neighborhood Energy Challenge, upcoming WNA elections, Pancake Breakfast and more...

If you need a ride, call Mike Eanes at
410-733-2092.

*Every child is an artist.
The problem is how to remain
an artist once we grow up.*

~Pablo Picasso